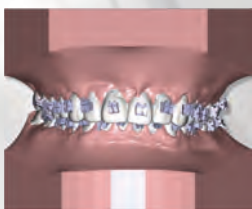
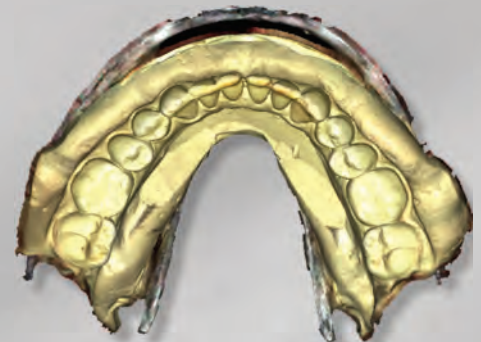
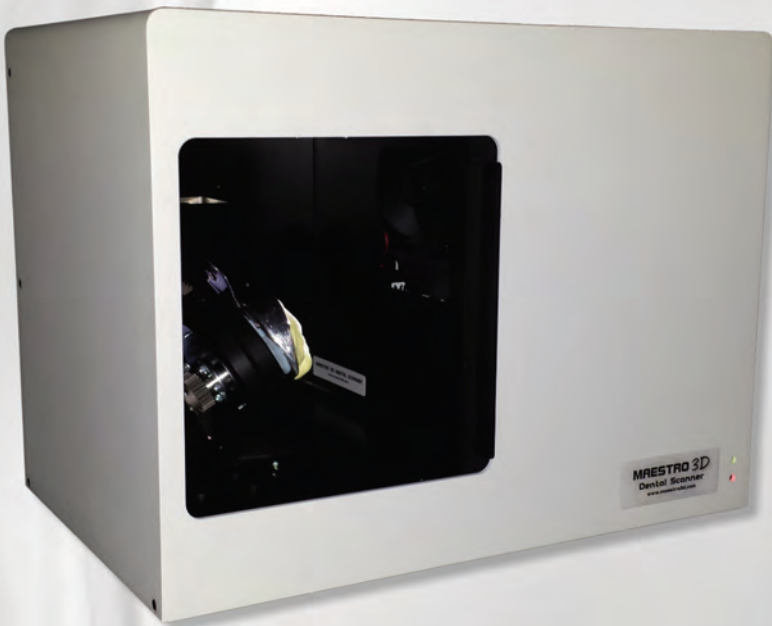


Maestro 3D Dental System

Innovative solutions for dental applications



THE POWER TO BE EASY!

Dental System



Dental Scanner

Technical Specifications

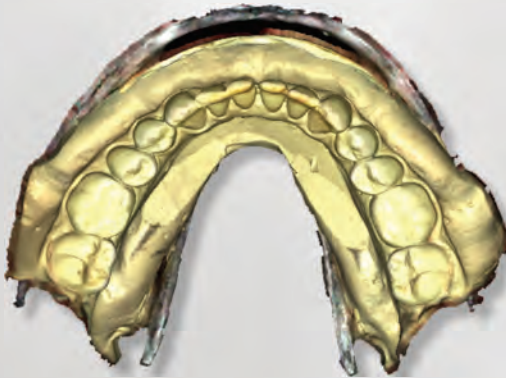
Plug & Play	YES
Texture Color Superimposition	YES
Calibration	YES
Impression scanning	YES
Multi die support	YES
Customizable scanning strategy	YES
Number of cameras	2, high-res with high quality lenses
Projector	1, structured light (LED)
Object movement	rotary table, 1 or 2 axis
Operating voltage	110V or 220V
Scan surface	90mm[W] * 90mm[D] * 60mm[H]
Interface	USB2 or USB3
Output formats	STL, PLY, open formats
Accuracy	< 10 micron
Resolutions	< 0,07 mm
Scanner dimensions	400mm[W] * 300mm[D] * 265mm[H]
Weight	15 Kg
Operating temperature	5 - 40 degrees Celsius
Approved Regulations	CE, FDA



Texture Color Superimposition module

This module is useful to obtain models with a RGB color texture or grey scale. For example it helps create very accurate margin lines as marked on the model.

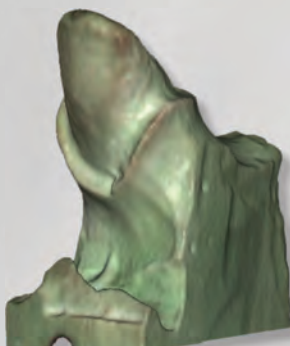
Impression with real color



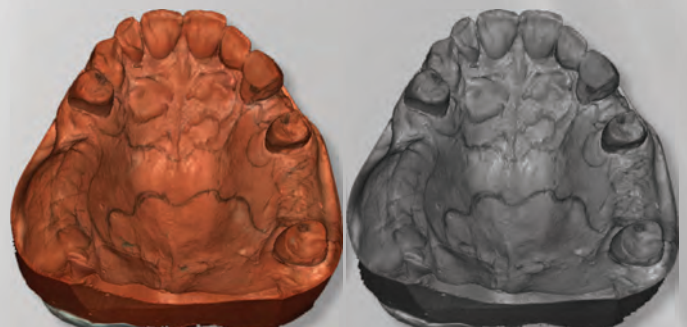
Stone with real color



Stump with real color

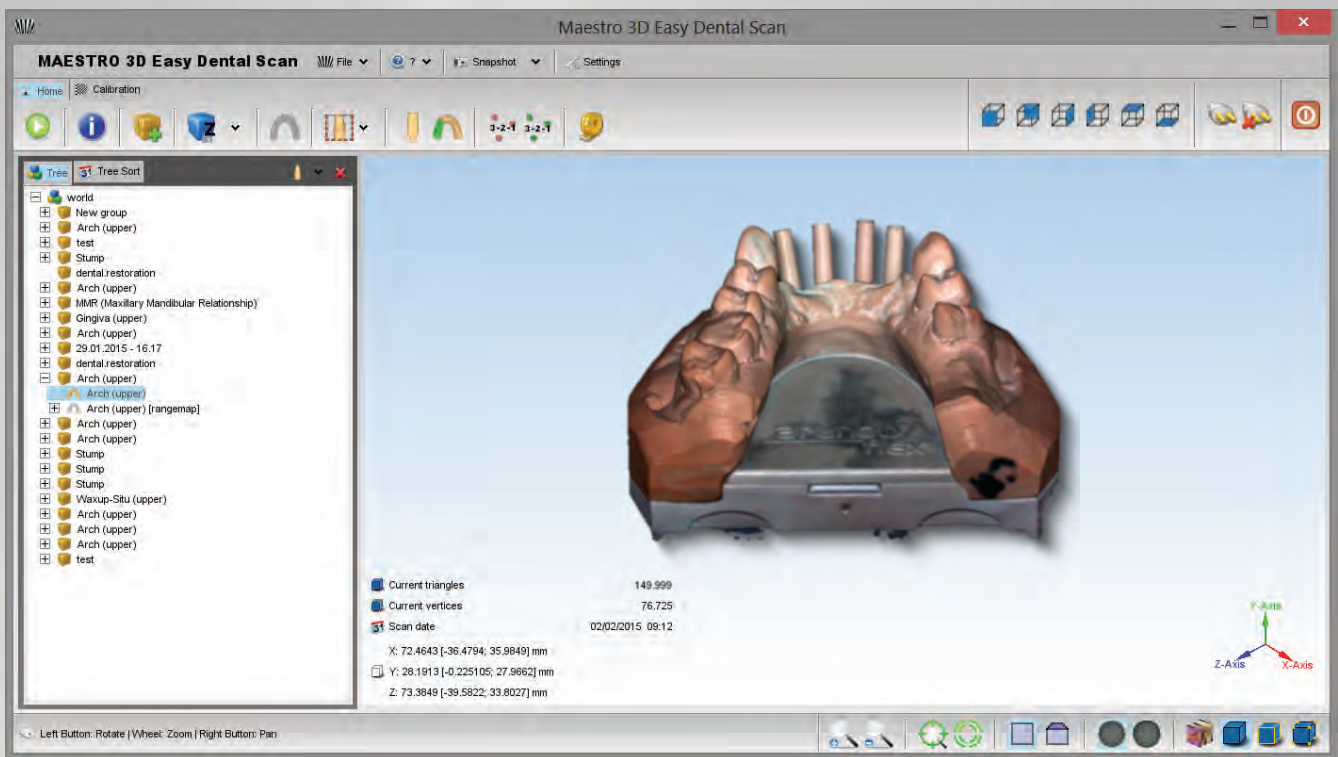


Stone with real color \ grey scale color



Easy Dental Scan -

Easy Dental Scan - scanning control software



Automatic

the scan of any models is totally automatic and doesn't need any manual user intervention.

Stable

the projected light parameters and the camera parameters are automatically adjusted according to the ambient lighting and material properties and color of the model to scan.

Parallel

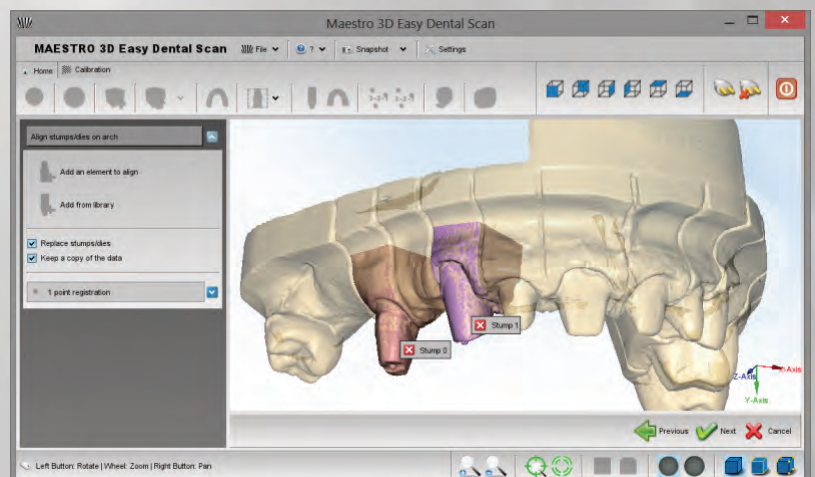
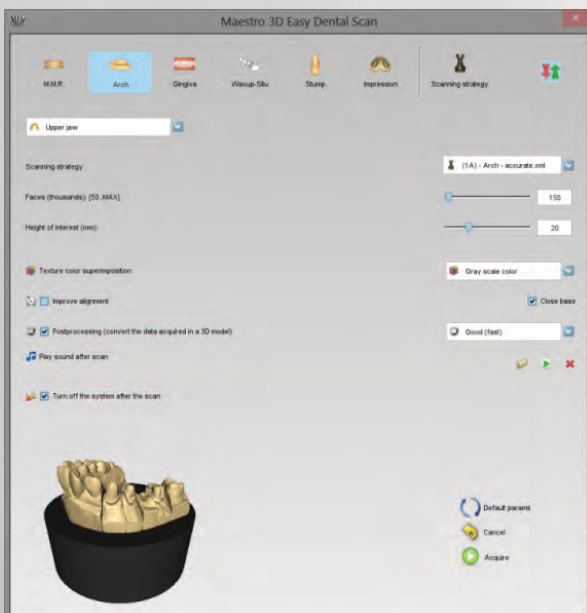
simultaneous acquisition of more than one model in a single work session.

Open

completely open with no restrictions.

Integrated

full integrated with third party dental CAD as Exocad.





MB Maschinen GmbH
Zimmerwiesenweg 2/2a
D- 63599 Biebergemuend
Tel: +49 6050 8702
email: mb-maschinen@t-online.de
www.mbmaschinen.de